

Now, we're going to put several things we've learned together! But first, we'll learn about **stepping**.

In music, "**stepping**" is when you go from one note to the note right next to it whether that's **up** or **down**.

Here are some **up** examples:

**A to B , B to C , C to D , D to E ,
E to F , F to G , G to A**

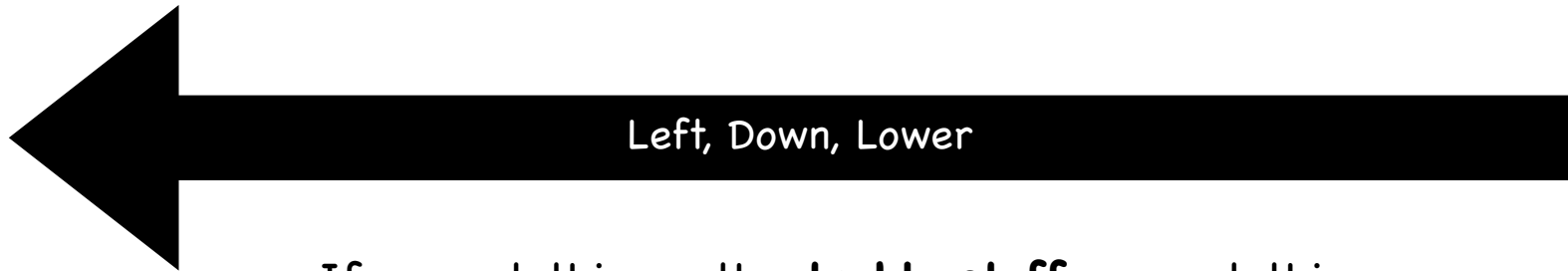
And here are some **down** examples:

**A to G , G to F , F to E , E to D ,
D to C , C to B , B to A**

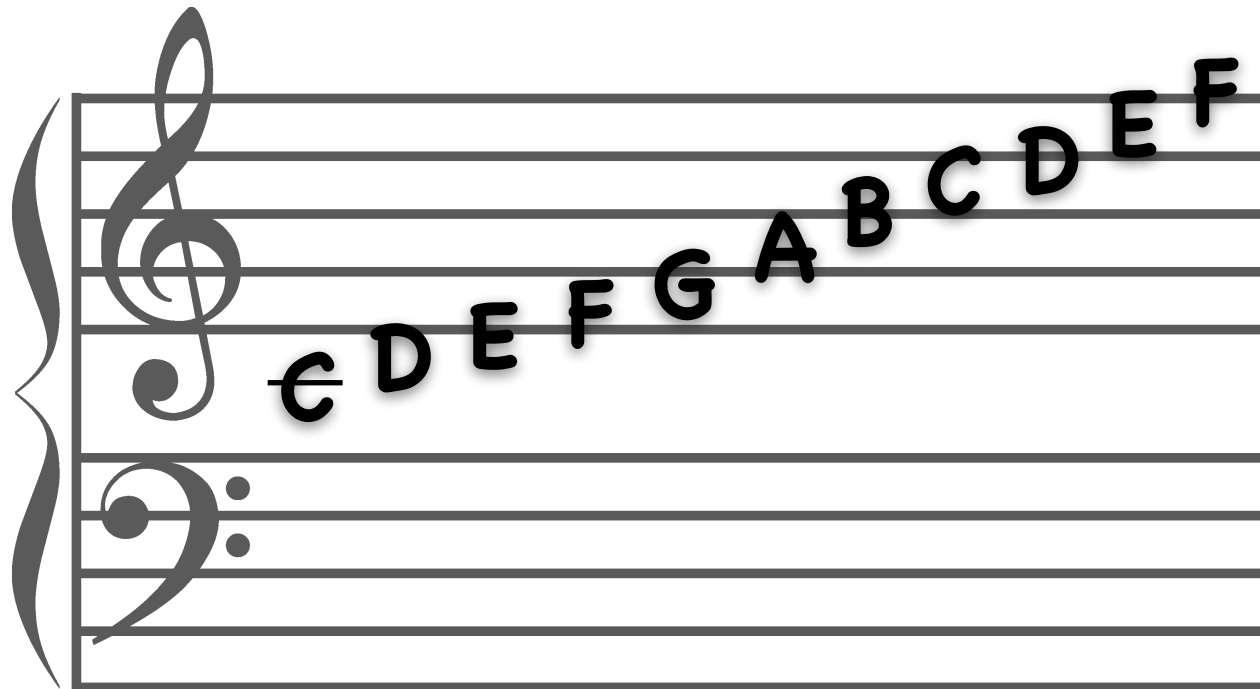
Remember this?



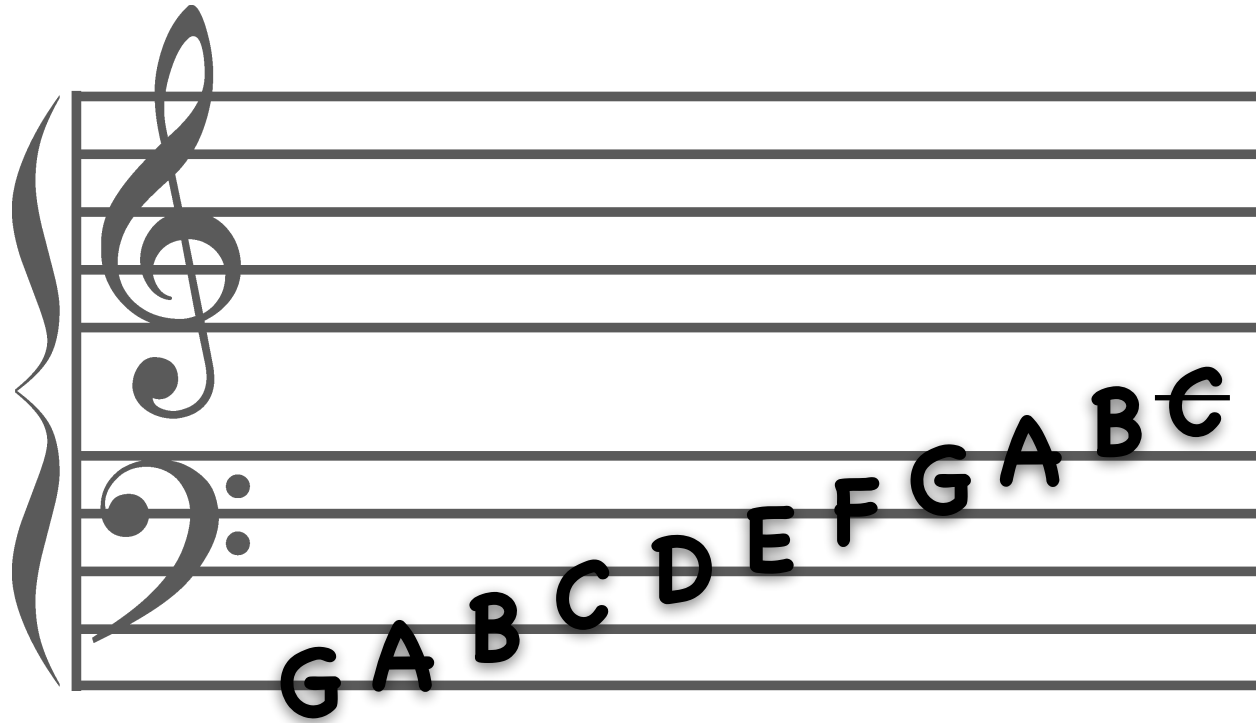
... E F G , A B C D E F G , A B C ...



If we put this on the **treble staff**, we get this:



If we put this on the **bass staff**, we get this:



If you're having trouble getting started (remembering a note name/ letter on the staff) you can either use:

1. Our treble clef and bass clef phrases ("Every Good Boy Does Fine", "FACE", etc.), OR
2. Landmark notes (**middle C**, **treble G**, and **bass F**).

Now we can actually explain why landmark notes have that name - it's because we can use these notes to find other notes, just like how you can use landmarks to find where you are!

